

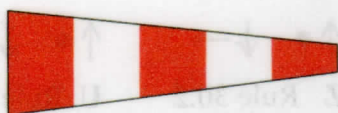
# RACE SIGNALS

The meanings of visual and sound signals are stated below. An arrow pointing up or down ( $\uparrow \downarrow$ ) means that a visual signal is displayed or removed. A dot ( $\bullet$ ) means a sound; five short dashes (-----) mean repetitive sounds; a long dash (—) means a long sound. When a visual signal is displayed over a class flag, fleet flag, event flag or race area flag, the signal applies only to that class, fleet, event or race area.

## Postponement Signals



**AP** Races not started are *postponed*. The warning signal will be made 1 minute after removal unless at that time the race is *postponed* again or *abandoned*.



**AP over H** Races not started are *postponed*. Further signals ashore.



**AP over A** Races not started are *postponed*. No more racing today.

## AP over a Numeral Pennant 1-9

Postponement of 1-9 hours from the scheduled starting time.



Pennant 1  $\uparrow \bullet \bullet \downarrow$



Pennant 2  $\uparrow \bullet \bullet \downarrow$



Pennant 3  $\uparrow \bullet \bullet \downarrow$



Pennant 4  $\uparrow \bullet \bullet \downarrow$



Pennant 5  $\uparrow \bullet \bullet \downarrow$



Pennant 6  $\uparrow \bullet \bullet \downarrow$



Pennant 7  $\uparrow \bullet \bullet \downarrow$



Pennant 8  $\uparrow \bullet \bullet \downarrow$



Pennant 9  $\uparrow \bullet \bullet \downarrow$

## Abandonment Signals



**N** All races that have started are *abandoned*. Return to the starting area. The warning signal will be made 1 minute after removal unless at that time the race is *abandoned* again or *postponed*.



**N over H** All races are *abandoned*. Further signals ashore.



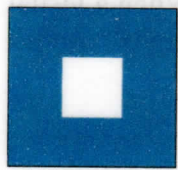
**N over A** All races are *abandoned*. No more racing today.

## Safety

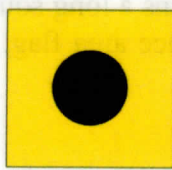


**V** Monitor communication channel for safety instructions (see rule 37).

## Preparatory Signals



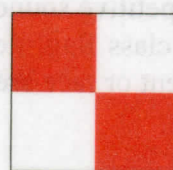
↑ • ↓ —  
**P** Preparatory signal.



↑ • ↓ —  
**I** Rule 30.1 is in effect.



↑ • ↓ —  
**Z** Rule 30.2 is in effect.



↑ • ↓ —  
**U** Rule 30.3 is in effect.



↑ • ↓ —  
**Black flag.** Rule 30.4 is in effect.

## Recall Signals

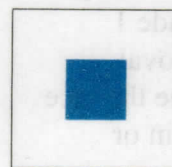


↑ •  
**X** Individual recall.



↑ • • ↓ •  
**First Substitute** General recall.  
 The warning signal will be made 1 minute after removal.

## Shortened Course



↑ • •  
**S** The course has been shortened. Rule 32.2 is in effect.

## Changing the Next Leg



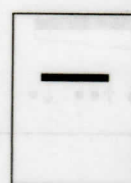
---  
**C** The position of the next *mark* has been changed:



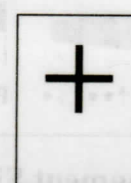
to starboard;



to port;



to decrease the length of the leg;



to increase the length of the leg.

## Other Signals



↑ •  
**L** Ashore: A notice to competitors has been posted.  
 Afloat: Come within hail or follow this vessel.



---  
**M** The object displaying this signal replaces a missing *mark*.



↑ •  
**Y** Wear a personal flotation device (see rule 40).



(no sound)  
**Orange flag.** The staff displaying this flag is one end of the starting line.



(no sound)  
**Blue flag.** The staff displaying this flag is one end of the finishing line.